

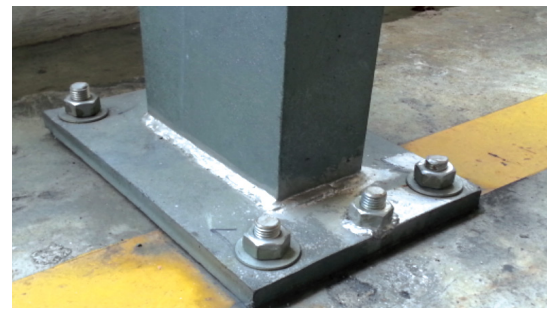
FEATURES & APPLICATIONS



- Fully assembled and easy to use.
- Long thread for flexible embedment depth.
- Anti-rotation lugs for easy expansion and minimise slippage.
- Ideal for handrails, guardrails, dividers and M&E fittings.
- Steel brackets, curtain wall's runners and angle plate installations.

ORDERING DETAILS

Anchor Size	Hole Diameter (mm)	Anchor Length (mm)	Thread Length (mm)	Product Part No.
M8	8	75	45	WA875
M10	10	90	55	WA1090
M12	12	100	60	WA12100
		120	80	WA12120
M16	16	125	75	WA16125
		140	75	WA16140
		150	75	WA16150
M20	20	130	65	WA20130
		160	75	WA20160



LOADING DATA

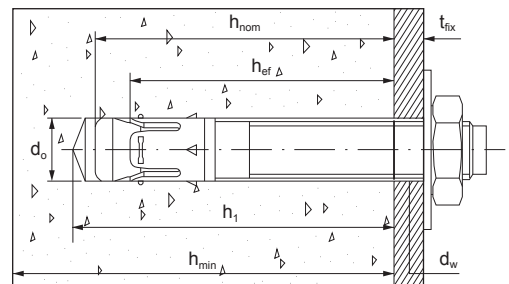
Design Load

Anchor Size		M8	M10	M12	M16	M20
Tensile Load (kN)	N_{Rd}	6.8	9.5	14.5	21.2	28.7
Shear Load (kN)	V_{Rd}	7.0	12.0	13.5	34.0	53.6

Recommended Load

Anchor Size		M8	M10	M12	M16	M20
Tensile Load (kN)	N_{Rec}	4.9	6.8	10.4	15.1	20.5
Shear Load (kN)	V_{Rec}	5.0	8.6	9.6	24.3	38.3

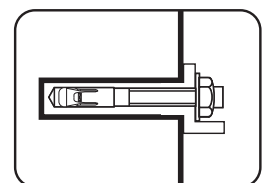
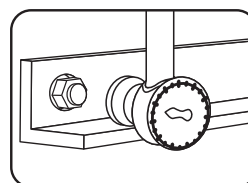
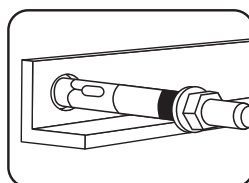
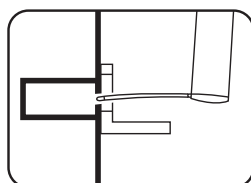
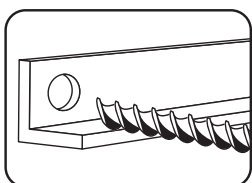
SETTING DIAGRAM



SETTING DETAILS

Anchor Size		M8	M10	M12	M16	M20
Drilled hole diameter (mm)	d_h	8	10	12	16	20
Recommended Torque (Nm)	t	15	35	45	95	150
Fixture hole diameter (mm)	d_{fix}	9	12	14	18	22
Minimum hole depth (mm)	h_{min}	60	70	95	100	120
Embedment depth (mm)	h_{nom}	60	70	95	100	120
Effective hole depth (mm)	h_{ef}	45	50	70	85	100
Minimum concrete thickness (mm)	b_{min}	100	110	130	168	206
Maximum fixture thickness	t_{fix}	L - 60	L - 65	L - 95	L - 110	L - 135
Critical anchor spacing (mm)	$S_{cr, N}$	144	165	195	252	309
Critical edge distance (mm)	$C_{cr, N}$	72	83	98	126	155
Minimum anchor spacing (mm)	S_{min}	65	70	85	110	135
Minimum edge distance (mm)	C_{min}	65	70	85	110	135
Wrench Size	W	13	17	19	24	30

INSTALLATION PROCEDURES



IMPORTANT NOTICE:

All information and data therein used for computation in the formulas must be in accordance with STATHEROS technical instructions. Much emphasis is placed on strict adherence to this. Results derived are solely based on the data used. Responsibility of error, incompleteness of data & etc. rests solely on the user. Results derived from the computation serves only as a guide, not to be taken for a specific application. Due care must be taken to have results verified by third party if necessary.